

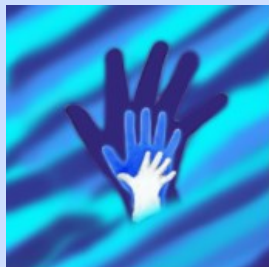


The Illuminate

A publication of Family of Christ Lutheran Church

Family of Christ Vision Statement

Family of Christ is a family of God where all are welcome as we worship and grow in spirit and in life by...



- ~ **Connecting the scriptures** with our Christian faith and life experiences
- ~ **Serving** and caring for our neighbors and communities
- ~ **Building** relationships between people of all ages **and walks of life**
- ~ **Transforming** our world by teaching love, grace, peace, and kindness
- ~ **Moving purposefully** into God's future

and we ask God to help and guide us.

This month's Pastor Reflection Is Short and Sweet and Begins a New Series for the Illuminate!

Spiritual Practices for Busy Lives

Spiritual practices come in many flavors, from the deeply spiritual like meditation, to the ritual, or the practical. For example, while some folks find meditation and morning devotions helpful, others use the discipline of the morning run as the ritual to start the day off right. As they run, they think through life's issues, pray, take in the scenery. Simply put they work at caring for body mind and spirit. Taking time to care for body, mind and spirit does not have to be complicated. The key is to simply begin and establish a habit for yourself and if possible your family. I suggest you use the tool of your family schedule. Sit as a family and schedule two hours a week where everyone does nothing but be together. Relaxing, playing a board game, sharing time with your loved ones can do more for body mind and spirit than running a marathon. So today, I'm taking time to have lunch with Dan. We don't usually do that during the week, but it's time to begin something new. How about you?

Blessings,
Pastor Kit

Living Lutheran: A place to witness and share everyday living faith

At Living Lutheran, there's something new for you every day. Well, almost every day. How about something new posted five days a week, all year long? Martin Luther said, "***Our faith is a living, busy, mighty, active thing.***" Living Lutheran invites you to share in the sense of purpose and call to action that our faith brings to our lives. As an online publication of the ELCA, Living Lutheran's goal is to provide a place for members and friends alike to find lively engagement in faith and life. At Living Lutheran you'll find the voices of ELCA members, as well as what's happening in communities, congregations, synods and ELCA-related organizations across the country and around the world. Something new is posted each weekday: feature blogs, stories, photo blogs, an "Ask a Pastor" column, videos or new Seeds resources and programs for congregations. Living Lutheran offers a place for ELCA members to share their diverse experiences of what it means to live Lutheran. Visit Living Lutheran every day throughout the year at www.ELCA.org/Living-Lutheran.

Reprinted from "Seeds for the Parish".

March Highlights



- OWLs meet Tuesday March 3rd @ Noon, bring a sack lunch
- Quilters meet Wednesday March 4th, 10 am to Noon
- Every 1st Thursday, March 5th, at 1 pm, Caregiver Support Group meeting at Judy Enders home.
- Spring Forward!! March 8th Daylight Savings begins.
- Our next Million Meals in -gathering and Preschool Sunday (followed by Mac & cheese) will be March 8th.
- Volunteer Planning/Orientation for VBS, Tuesday March 10th at 9 am and Thursday March 12th at 7 pm.
- Pack cookies for college, March 14th, 9 am.
- Senior Lunch Bunch, Thursday March 19th, 11:30 am
- First Communion class Saturday March 21, 10 am to Noon. Sign-up in the Family Room.

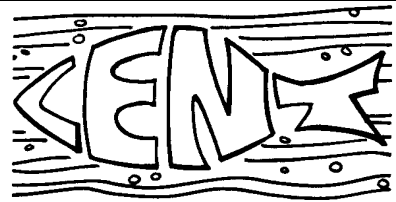
Saturday March 28th

All Church Work Day.

Come help us spruce up inside and out in preparation for Holy Week and Easter Sunday. Gather at 9 am. Bring your gloves and tools.



Wednesdays in March



Soup Supper & Sandwiches at 5:00 pm
Lenten Worship at 6:30 pm



Midweek "Signs of Lent" Services of Devotion @ 6:30 PM



Lent is a penitential season. It's important to know that this season is not a season of shame. Rather it is a season to reflect upon our lives. We are invited to ponder the questions of life and faith, and to look to the wisdom of scripture and the grace of God for the reorienting of our lives in Christ. Our devotions will center on the *Signs of Lent* that mark the way during our Lenten pilgrimage. Are there places where you need to *Make A U Turn* and reconsider a decision, attitude, or care for a relationship? Do you need to *Stop* to pray and think more carefully before you act rashly or rush ahead? Is it time to *Yield* to the needs of another? Are you speeding on a *One Way* or stuck in a *Dead End*. Through prayer, song, and scripture you are invited to ask deep questions along the way of Lent and allow God's wondrous Grace to guide us. Come, you will be blessed.

Adult Christian Education Offerings and Small Groups

Sunday: We continue our in-depth look at Martin Luther's Large Catechism. During the month of March, we will be looking at Holy Communion both from the catechism and the scriptures. Together we will explore Luther's wisdom for his day, and ask how this might inform our time. Is the catechism bound in its time, or does it remain relevant and helpful in our day? How might it

inform our faith and our living? Meet Pastor Kit in the Library @ 9:45!

Monday Night @ 7:00 – Bible Study at the home of Jerre & Sharon Crisp.

Tuesday 10:00 A.M. – Tuesday morning Bible Study Join us as we take on the text for the upcoming

Sunday Pastor Kit will meet in classroom 4.

Wednesday 1:00 P.M. – Small Group Bible Study @ Donna Lucky's

Wednesday Family Night Bible and Book Group led by Edie Dietzen and Linda Marousek

Ministry Opportunities by Pastor Kit

We are moving purposefully into God's future by making a difference!

Preschool Sunday

We have invited the Preschool Families to the 11:00 church service on Sunday March 8. We hope that you will join us for this worship service as Pastor Kit teaches a special children's message and the preschoolers will be singing a few of their favorite songs for you.

The service will be followed by hot dogs and Mac-Cheese for lunch.

Mission Partner Focus

The ELCA Hunger Appeal is our mission Partner from January 1st through March 31st. Through your gifts to the ELCA Hunger Appeal you are working around the globe relieving hunger, creating opportunities through sustainable development, investing in agriculture, education, micro loans, and economic opportunities among the world's most vulnerable populations. Along with our global partners, the ELCA Hunger Appeal works to create healthy communities and villages able to provide for the needs of their people. Together we are working to eradicate Malaria, stem the tide of HIV and end the Ebola epidemic. From fish farms and honey bees in India, to inner city community Gardens, food pantries, and nutrition education in places like Detroit and Chicago, you are making a difference worldwide. Please make your check out the FOC and write Hunger Appeal on the memo line. A single check will be mailed from the congregation to the ELCA Hunger Appeal.

Are you looking for a meaningful way to be a blessing? How about volunteering at the Friends of the Carpenter Second Chance Thrift Store! Second Chance is in desperate need of Saturday volunteers! Due to illness and changing circumstances, Second Chance has lost a few of their regular volunteers. Over the past several months, they have had to reduce hours of operation, especially on Saturday. This means fewer sales and reduced income that goes to support Friends of the Carpenter's Friendship Center ministries. Do you have a few hours to give? Stop by Second Chance and fill out a volunteer application. While you're at it, go shopping. They have lots of wonderful items available!

Vacation Bible School planning is underway. Check out Susan Dollinger's article on page 5 for details. BUT don't stop there, spread the word. Invite your friends. Ask how you can support our ministry among the children of our community. Come and join the fun!

Preschool Carnival Coming!



The annual carnival for our community is always a fun time! To make this a success, a lot of volunteers are needed on April 25th from 4-7 pm. The shifts are from 3:45-5:15pm and 5:15-7:00 pm. This is a very important fundraiser for our wonderful preschool and *they need your support* by the giving of a small amount of your time. It will take many hands to make this day special for all of our preschool children and their families. Watch for volunteer sign-up sheets coming soon!

March Birthdays

2 Andrew Ness	16 Cassidy Leatherwood
4 Kiera Caton	19 Kathy Jans
9 Eric Eisenbarth Jr.	21 Rick Ochsner
9 Sue Endresen	22 Erik Ness
10 Julia Born	23 Fred Smith
13 Bentley Boyle	23 Barbara Sobocinski
13 Bonnie Scogin	25 Dan Howe
15 Kathryn Mathews	26 Jerre Crisp
15 Carolyn Ness	27 Colin Huff
16 Don Martin	27 Herb Steinmeyer

March Anniversaries

2 Tom & Sandie Sandeen
6 Harold & Debbie Broers
13 Colin & Alice Huff
16 Herb & Peg Steinmeyer

Ooops! Did we miss you? Please contact the office so we can update our list!



Is Your Child Ready for First Communion?

Not sure? A class is scheduled for Saturday March 21st, 10 am to Noon for a time of learning about

Holy Communion. Sign up in the Family Room.

Time for Spring Cleaning! Remember our May Day Sale on May 2nd and start saving your stuff!

By Susan Dollinger

The May Day Sale is coming May 2nd.

If you have a **home-based business**, and would be interested in a tent space for the outdoor portion of the rummage sale contact Susan Dollinger at 573-5031 or conglifemin@foclutheranchurch.org. Spaces are limited.

CRAFT DAY is coming April 18th

A Craft Day, sponsored by the OWLS is coming on Saturday, April 18th from 10AM-2PM. Bring a sack lunch and a craft to do or come and learn how to make a pillow top.

We are looking for donations of

- batting
- fabric (or bed sheets)
- Sewing needles
- Thread
- Quilt panels (all sizes welcome)



We are also looking for anyone who is interested in teaching or demonstrating a sewing craft or a wood craft. Contact Susan Dollinger. Thank you.

A “Craft Day” prep party will be Tuesday, March 17th at noon! Bring scissors and a brown bag lunch. All are welcome!

Coming Soon! Holy Yoga~watch for announcements!



NEXT OWLS Meeting will be Tuesday, March 3rd at noon. Bring a bag lunch.



PLEASE SAVE THE DATE TO CLEAN YOUR CLOSETS

Our huge May rummage sale that funds our Social Justice Ministry for emergencies and charity work will be held May 2 with donated items to be taken in beginning April 27 for the whole week. Hope you have some treasures to donate!

ANOTHER WHO SEASON ENDS

On March 30, the WHO shelters at St. Paul and St. Andrew Lutheran Churches will finish their 12th year of operation. Thank you to all who have volunteered at both and donated to both.

The end means 24 men and 50 single women, families, and couples will once again be on the street without shelter until next November. If you can donate sleeping bags, tarps, blankets, tents, socks, food, or money, we'll see that everyone at least has camping provisions to get them through the remaining wet months. Then I'd ask you to pray for these folks that they don't get illegal camping tickets for sleeping on the ground since they have nowhere else to sleep.

We'll continue to go out every Sunday evening to check on their conditions and bring dinner so if you have any of the above donations, please leave them near the mailboxes in the church entrance. Thank you good and generous friends. *Judy Enders*

Ladies Birthday Luncheon Saturday May 24th @ Noon IT WILL BE HERE SOONER THAN YOU THINK! BE A PART OF PLANNING!

A general meeting to help organize the Ladies Birthday Luncheon is set for Wednesday, March 18, at 5:30pm. This meeting establishes the program theme & committees as we gear up for the luncheon set for May 23.

Come to Family Night dinner at 5pm and then join us to get organized. We need women interested in helping in every way— publicity, decorating, program, food, etc. Come be a part of this wonderful, fun activity.

**See you Wednesday, March 18, 5:30pm.
Questions? Call Sandie Beems 989-4168**



March Preschool News

Submitted by Jackie Ochsner, Preschool Director

Registration for the 2015-2016 school year has begun. If you know of anyone with a child between the ages of 2-5 looking for a great preschool program, please give them our name. We would love to have them come and join us for a day of fun here at preschool.



Basic Program Information

Ages, class days, times and tuition are:

2's classes: Mon/Wed or Tues/Thurs 8:30-11:30 Tuition \$ 150.00 per month

3's classes: Tues/Thurs 8:30-11:30 Tuition \$ 150.00 per month

3's classes: Tues/Wed/Thurs 12:15-3:15 Tuition \$ 190.00 per month

4's classes: Mon/Wed/Fri 8:30-11:30 Tuition \$ 190.00 per month

4's classes: Mon/Tues/Wed/Thurs 12:15-3:15 Tuition \$ 230.00 per month

Preschool Celebration

We have invited the Preschool Families to the 11:00 church service on Sunday March 8. We hope that you will join us for this worship service as the preschoolers will be singing a few of their favorite songs for you. The service will be followed by a Mac-Cheese & hot dogs lunch. DELICIOUS :o)

Vacation Bible School

Volunteers Are Needed



Please set your calendars for the last week in July for VBS! **Weird Animals – Where Jesus' Love Is One-of-a-Kind** is coming to Family of Christ on July 27th-July 31st with a special Sunday Funday on Sunday August 2nd.

It will take many hands to put on this event for the children and we need your help! Come learn how you can help us by attending a volunteer planning/orientation meeting on either Tuesday, March 10th at 9:00 am or Tuesday evening March 10th at 7:00 pm (You only need attend one of the meetings). Please come be a part of this amazing adventure. This is also a great volunteer experience for high school students and young adults.

If you have any questions contact Susan Dollinger conglifemin@foclutheranchurch.org or call 573-5031 or stop by Office C (Tuesday 10-2, Thursday 9-2) or call for an appointment.

Family Fun Night ~ Spring Fling Dance

Please join us on Thursday March 26 as we welcome Spring at our annual Spring Fling Dance. Local DJ Craig Brown will be providing the music for our fun filled evening. The music starts at 6:00. This event is fun for the whole family.

We're going to the zoo zoo zoo...

Our next big unit downstairs in the Preschool is the ZOO. To end this theme we will be taking a field trip to the Portland Zoo at the end of the month! We are all so excited for this fun filled day!

Upcoming March Events:

March 2: Community Enrollment begins

March 8: Preschool Sunday Celebration
11:00 Service

March 13: NO SCHOOL ~ Staff Training at
Black Lake Bible Camp

March 26: Family Night ~ Spring Fling
Dance with DJ Craig Brown

March 30: Field Trip to ZOO

March 31: Field Trip to ZOO



WEDNESDAY NIGHT
“FAMILY NIGHT @ FAMILY OF
CHRIST” JOIN THE EXCITEMENT!!

Take the night off from cooking, and relax and enjoy the fellowship and a hot dinner prepared by loving hands. It's Lent, so the menu includes a variety of soups, sandwich fixings, and ice cream bars or cookies. After dinner, join in for one of the scheduled activities listed below. **A free will offering will be received.**

- * Soup Supper served between 5-6:30 pm
- * Ring of Joy intergenerational bell choir 5:30
- * Little Christians for children PreK-4th grade is a night of fun, crafts, and fellowship from 6:00-7:00p.m.
- * Route 56 youth group for 5th and 6th graders! Fun, service, and faith supporting conversations makes this an awesome time! Meet from 6:00-7:00 p.m.
- * Confirmation with Pastor Kit & Pam Ausman; **note the time adjustment during Lent: 5:30-6:15.**
- * Adult Bible Study/Book Group lead by Edie Dietzen and Linda Marousek
- * Chancel Choir Rehearsal ~ 7:00--8:00P.M

Interested in sharing your culinary talents? Bring your favorite soup! Sign up sheets are posted for Lent Soup Suppers in the Family Room.

Help us be prepared by signing up in advance!



Million Meals

February donations received to date have been \$921. That will provide 11,512 lbs of food and as many meals. To date we have donated enough funds to provide 1,612,425 meals!

Next in gathering is March 8th

One of our favorite Spring activity is to raise Painted Lady butterflies from the larva stage and watch their transformation



over the weeks as they struggle to build their cocoons and eventually break out from their 'old life' into their new life as butterflies! This is our 4th year and each time, it is exciting to wait, watch, and then experience the joy that happens as they are released outside in Gertie's Garden on Easter!

Butterflies represent new life on Easter and are one of the most well known Christian symbols representing the transformation that occurred when Jesus died and rose again. In 2 Corinthians 5:17, it says "Therefore, if anyone is in Christ, he is a new creation; the old has gone, the new has come!"

You can watch this transformation in the Sunday School office and hopefully they will be ready to be released on Easter Sunday!



Our third Heifer International ingathering will be on March 22nd. This time we will learn how valuable chickens are to families since they give protein-rich eggs or meat to eat or sell. We are also going to talk about the importance of seedlings for both trees and plants and how they help animals, soil, and families. We've raised over \$100.00 so far, and in May, at our last ingathering, the students will make the decision on how to support Heifer International with their Sunday School offerings.

It's not too late to join us!! We meet in the Sanctuary from 9:45-10:00 for opening and then head out to our classes from 10:00-10:45! Our teachers are fabulous and the lessons are wonderful!

~Cheri Herzog
Sunday School Coordinator

Klineline Kid's Fishing Event

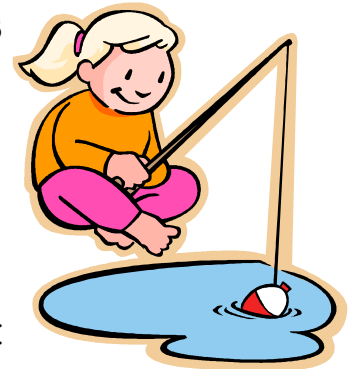
Friday, April 10 for Special Needs Kids and Adults

Saturday, April 11 kids ages 5--14 years old

Cost: \$5.00 per child

includes T-Shirt and ZEBCO Rod & Reel

Pick up a registration form at the church or sign up online at:
www.klineline-kf.org



Fishing times will be assigned after registration is completed and turned in. Register by or before April 4, 2015. Sponsored by Klineline Kids Fishing Nonprofit & local businesses.

Questions? Speak with Al Jaffe

“Get More Kids Outside and Fishing More Often”

VETERANS ADVOCATES NEEDED

If you are a veteran of the armed forces and feel no veteran should be homeless or sleeping on the floor at the WHO shelters after serving our country, you can help by assisting vets in the lengthy process required of them to get their benefits or housing. If you would be willing to talk to us about the process, please contact Judy Enders or Dave Slocum at 573-5120. Thank you for considering helping a veteran after all they've done to help us.



Donate from your smart phone

Family of Christ now offers a mobile version of our online giving page to make it easy for you to give anytime from your smart phone. Simply scan the image you see here using your phone's

QR code reader or go to www.foclutheranchurch.org and locate the online giving page.

Sanctuary: Safe Conversations on Gay Issues

Our next meeting will be on Tuesday March 17th at 7pm. Meet in library.

The Sanctuary Group has been meeting for about four years to discuss and explore a variety of issues relevant to gay folk and their loved ones. An important part of our mission is to reach out to our gay neighbors with a warm invitation to worship, as well as providing a supportive presence within the congregation for family members of LGBT loved ones.



March Social Concerns



Tuna Fish

Because Neighbors Helping Neighbors is located in Ridgefield, it really does help our neighbors. Place your donations in the basket by the sanctuary doors.

Around the ELCA

God's Advocate for the Hungry & Poor in Washington State

The ELCA and its predecessor church bodies have always held that “public church/public voice” by the denomination, its rostered leaders, and its baptismal members is an important and vital part of our baptismal calling. Our Church’s social statements/policies tell our many positions on critical social issues (view them at www.elca.org/social-statements). During the 2015 legislative session FAN (Faith in Action Network) will be advocating for four food and hunger related programs that are supported by our state tax dollars: WIC & Sr. FMNP (women, infant, children and senior Farmer Market Nutrition Program), EFAP (Emergency Feeding Assistance Program), SFA (state food assistance), and BAB (Breakfast After the Bell).

- WIC & Sr. FMNP is a ‘win-win’ investment of our tax dollars for local growers and low income households to access fresh fruit & vegetables.
- EFAP is our public investment in our state food banks. Private contributions are critical but they cannot operate without state funding.
- SFA is a state only investment to provide food supports for legal immigrants – particularly Pacific Islanders (brought here in the 1950’s for our nuclear testing program).
- BAB is a \$5 million investment to increase participation of breakfast at our ‘high-risk’ public schools.

Let your voice be heard. Communicate with your legislators using the legislative hotline (1-800-562-6000) or the email formula of `firstname.lastname@leg.wa.gov`.

All ELCA churchwide funding for its governmental advocacy ministries is funded through ELCA World Hunger. For more information about ELCA Advocacy go to www.ELCA.org/hunger

This article has been edited down for space. To read in its entirety go to: www.lutheranssw.org/news-publications and select the “Moments for Mission” February 2015 edition.

How do we grow
Family of Christ?.....

**Pray, Invite, Welcome,
Share, Serve, Tell**

We are blessed with an awesome congregation with many wonderful ways to come together in worship, prayer, fellowship, learning and service. Let’s work together to be all that God created us to be by sharing what we have with our neighbors.

There are lots of new homes and neighborhoods growing up around us. Let’s go for some neighborhood walks and welcome folks!

Keep tuned for more info on how we will walk together. In the meantime,

**Pray, Invite, Welcome,
Share, Serve, Tell!**

	March 1		March 8		March 15		March 22		March 29	
	8:30	11:00	8:30	11:00	8:30	11:00	8:30	11:00	8:30	11:00
Greeters	Jerry & Edie Dietzen	Gary & Sue Endresen	Hazel Olson	Dale & Marilyn Wilken	Cliff & Betty Benjamin	Jerry & Edie Dietzen	Randy & Randi Osborn	Terry Caton	Dave & Karen Yankee	Tom & Sandi Sandeen
Ushers	Les & Beth Stark	Kim Koon	George & Carol Hoffman	Tom & Sandi Sandeen	Rick & Jackie Ochsner	Andrew Ness & Dietzens	Les & Beth Stark	Dan Neeley Sr.	George & Carol Hoffman	Gary & Sue Endresen
Acolytes	Piper Cameron	Sarah Breigenzer	Charlie Cameron	Christien Eisenbarth	Kylie Terry	Josh Wuethrich	Piper Cameron	Diedrich Eisenbarth	Dylan Terry	Emma Hoffman
Assisting Ministers	David Holmquist	Linda Marousek	Neal Adolf	Susie Caton	Ian Caton	Pam Ausman	Gail Seickman	Don Nelson	Linda Marousek	David Holmquist
Cantors	David Holmquist	Jeanne Downing	Neal Adolf	Susie Caton	Ian Caton	Pam Ausman	Randy Osborn	Don Nelson	Brian Hanneman	David Holmquist
Readers	Betty Perry	Dale Wilken	Dale Perry	Tim Nelson	Cecilia Shepard	Riley Caton	Barbara Sobocinski	Rick Caton	Greg Shaw	Breanna Jones
Communion Hosts	Dave & Karen Yankee	Cliff & Debra Jones	Randy & Randi Osborn	Brian & Laura Harris	Connie Marshall	Dale & Marilyn Wilken	Sandi Beems	Harold & Debbie Broers	Rick & Jackie Ochsner	Ian & Teare Caton
Coffee Hour	Barbara Sobocinski	Gail Sieckman	George & Carol Hoffman	Nick & Lynnette Breigenzer	Hazel Olson	Jeff & Rebecca Wuetrich	Jennifer Beems	Debbie Broers & Evelyn Kinder	Lew & Bobbie Lardie	Rachel Nelson

Lent

{ faith practices }



Ash Wednesday marked the beginning of Lent, a season when God calls us to reflect on the meaning of Christ’s death and resurrection. The imposition of ashes – when you receive ashes in the sign of the cross on your forehead – sets the tone for Lent. Each time you encounter your reflection, your ashes are a striking reminder that “you are dust, and to dust you shall return” (Genesis 3:19b). But the cross, a symbol of Jesus’ crucifixion, offers hope.

Similarly, in baptism, you received the sign of the cross on your forehead. Many of us begin our Christian life with baptism, called “to live among God’s faithful people, to hear the word of God and share in the Lord’s supper, to proclaim the good news of God in Christ through word and deed, to serve all people, following the example of Jesus, and to strive for justice and peace in all the earth” (ELW 236). In the ELCA, we describe these instructions as faith practices to guide our daily living. But what do faith practices mean? And how do we practice them?

This Lent, as you begin your journey toward the baptismal waters of Easter, we invite you to take up faith practices as a spiritual discipline. Each week leading up to Easter, you’ll find new educational content on the ELCA’s Facebook page that offers insight into how you can integrate faith practices into your daily life.

To receive these updates, visit the [ELCA’s Facebook page](#) and “like” the page. Already liked our page? Make sure you’ve turned on notifications to receive ELCA posts in your newsfeed. Even if you’re not on Facebook, you can view the posts by visiting the ELCA’s Facebook page.

- Reprinted from and see more at: <http://www.elca.org/en/Living-Lutheran/Blogs/2015/02/150219-Lent-Taking-up-faith-practices#sthash.N29GOMQb.dpuf>

2015 Holy Week & Easter



March 29
Palm Sunday 8:30am & 11:00am



April 2nd
Seder Meal 5:15pm
Maundy Thursday 6:45pm



April 3rd
Prayer Labyrinth
Good Friday 6:45pm



April 5th
Easter Sunday 8:30am & 11:00am
Breakfast 9:45am

Who’s WHO at FOC

Minister

Pastor Kathleen “Kit” Neeley
pastor@foclutheranchurch.org
FOC Office: 360-573-5031
In office Tuesday-Friday, Sunday
Call any time in an emergency
Cell: 503-453-4907

**Congregational Life Ministries
Coordinator**

Susan Dollinger
conglifemin@foclutheranchurch.org
FOC Office: 360-573-5031
Tuesday 9-1:30, Wednesday 6-7pm and
Thursday 10-1:30 **all other times are by
appointment.**

Music Minister

Sue Lincoln
hopmusic38@gmail.com

Choir Director

Don Nelson
donald.nelson@evergreenps.org

Office Administrator

Traci Rogers
office@foclutheranchurch.org
FOC Office: 360-573-5031
Monday-Thursday 8-5
Friday 8-3

Preschool Director

Jackie Ochsner
foccp@comcast.net
Office: 360-546-0731

Sunday School Coordinator

Cheri Herzog
ch040@aol.com

Centering Prayer

Linda Marousek
425-466-4358

Like Us on Facebook

[www.facebook.com/
FamilyOfChristLutheranChurchVancouverWA](http://www.facebook.com/FamilyOfChristLutheranChurchVancouverWA)



Family of Christ Lutheran Church

3500 NW 129th St.

Vancouver, WA 98685



Sunday Schedule

Worship Services
8:30am and 11:00am

Education Hour
9:45 am
7 pm Centering
Prayer



2 a.m.
Sunday
March 2
Daylight
Savings
Begins

FAMILY'S OFFICE HOURS

Monday – Thursday
8:00am – 5:00pm
Friday
8:00am – 3:00pm



The *Illuminate* is a monthly publication provided free to members & friends of Family of Christ Lutheran Church, 3500 NW 129th Street, Vancouver, WA 98685, a congregation affiliated with the Evangelical Lutheran Church in America (ELCA) Southwestern Washington Synod.

Phone (360) 573-5031. Fax (360) 573-3026.
www.foclutheranchurch.org

Preschool Phone: (360) 546-0731 www.familyofchristchristianpreschool.org

Please submit photos, articles or event announcements by the 15th of each month